

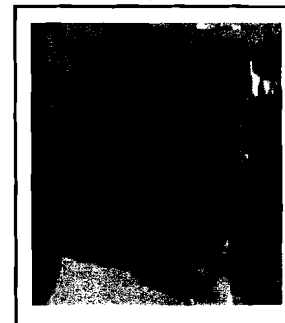
Parkland's Mission:
Dedicated to the health and well-being of individuals and communities entrusted to our care.

Our Vision:
By our actions, we will define the standards of excellence for public academic health systems.

Circles of Life:
Compassion
Integrity
Respect
Collaboration
Leadership
Excellence
Stewardship



Parkland
Health & Hospital System
Parkland Behavioral Health Center
6300 Harry Hines Boulevard
Dallas, Texas
214 590-5536



... for your mental health



Parkland
Behavioral
Health Center

The medical expertise and caring staff to help you feel better again.

Parkland

The Parkland Behavioral Health Center offers services for adults who are having trouble with:

- Depression
- Anxiety
- Post Traumatic Stress
- Bipolar Disorder
- Schizophrenia
- Psychosis
- Stress related disorders



Services we provide include:

- Psychiatric evaluations
- Medication management
- Social work services
- Community health services
- Onsite lab work
- Psychological and neuropsychological testing and evaluations
- Group therapy: depression group, women's group, geriatric group, process group, schizophrenic group, head injury group

The Parkland Behavioral Health Center offers a range of mental health services. These services are provided by psychiatrists, clinical social workers, nurses, case workers and psychologists.

The Adult Partial Hospitalization Program

A program for adults needing close monitoring but who do not need 24-hour inpatient care. Physician referral required.

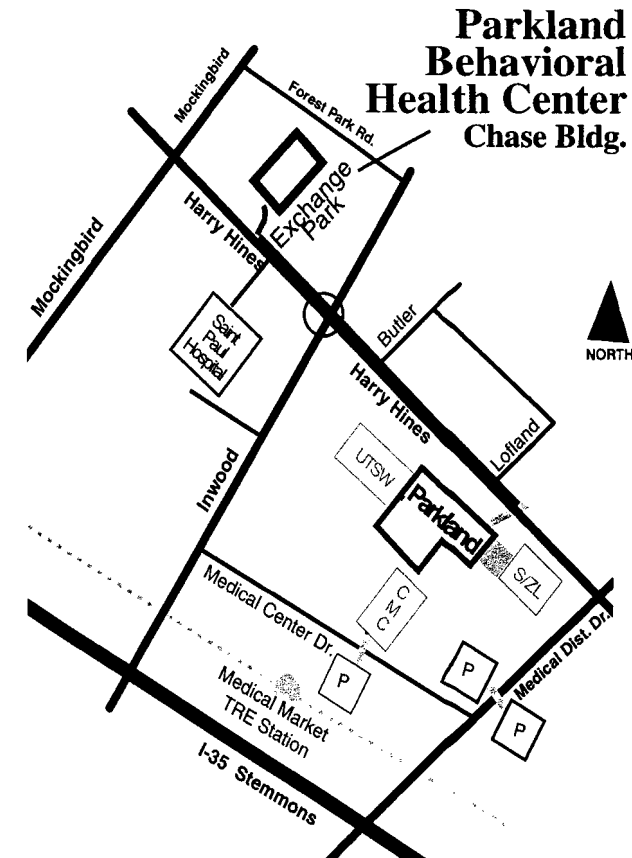
Postpartum Mental Health Clinic

We have specialists providing psychiatric care for women after delivery. Services include evaluations and ongoing treatments up to 12 months after delivery.

Geriatric Psychiatry

Services include:

- Evaluations for Alzheimer's and Dementia
- Capacity evaluations
- Family meetings
- Clinical consultations
- Medication management
- Neuroimaging



Parkland Behavioral Health Center

- Open Monday through Friday from 8am to 4pm.
- 6300 Harry Hines Blvd. on the 7th floor in the Chase Building
- For appointments or information, call 214-590-5536.
- We accept Medicare, most private insurances, cash or credit cards.